

VARIETY ATTRIBUTES

High yielding Mid Slow Maturity with a flexible mid season sowing window suitable for Early to Mid May seeding opportunities across Southern NSW

In Victoria LRPB Major suits sowing in the seeding window prior to Scepter, which has been used widely by growers of Trojan and Rockstar

Excellent disease package for SNSW/Vic production systems with good Septoria tritici resistance, combined with a compact canopy to aid in stubble management

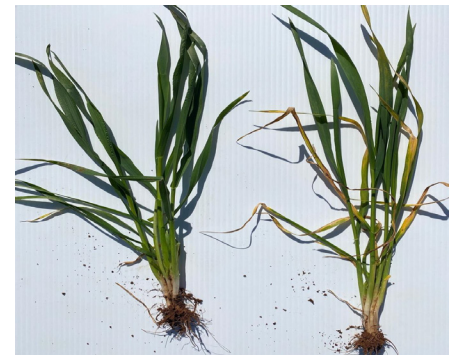
Strong performance in yield trials on both acid and sodic soils

LRPB Major has AH classification in both the South East (Sth NSW) and Southern (SA/VIC) classification zones. Classification for the Northern zone (Nth NSW/QLD) is expected prior to sowing in 2024

DISEASE RESISTANCE

Stem Rust	MRMSP
Leaf Rust	MRp
Stripe Rust East	MRMSP
Yellow Leaf Spot	MSP
Septoria Tritici Blotch	MSSp
Crown Rot	*MSSp
Powdery Mildew	MSSp

Resistance ratings: VS=Very Susceptible, S=Susceptible
MS=Moderately Susceptible, MR=Moderately Resistant
R =Resistant. Tol Rating - T=Tolerant, MT=Moderately Tolerant
MI=Moderately Intolerant, I=Intolerant, VI=Very Intolerant.
Varieties with * indicate breeder rating. Data sourced via NVT
(www.nvt.grdc.com.au) and LRPB Disease Screening Results
Feb 2023. p=Preliminary Data Based on limited data set



LRPB Major has improved Septoria resistance combined with decreased physiological yellowing over the Beckom parent

YIELD PERFORMANCE

LRPB Major has demonstrated high yields across a range of seasons while under yield testing within the LongReach Plant Breeders field program since 2018. Consistently out yielding Beckom throughout the program by 2-3% it was first entered into early season NVT trials across Southern NSW and Victoria in 2022.

% Mean Yield NVT Early Season MET Analysis (2018-2022)								
Variety	Maturity	All NSW/Vic	All Sth NSW	Sth West NSW	Sth East NSW	All Vic	Nth East Vic	Sth West Vic
RockStar	Mid	109.0%	107.9%	109.7%	105.7%	111.5%	107.2%	
LRPB Major	Mid Slow	102.6%	103.0%	103.7%	102.2%	101.7%	102.2%	101.4%
Scepter	Quick Mid	101.4%	102.1%	104.0%	99.8%	99.6%	102.0%	98.4%
Catapult	Mid	101.2%	101.0%	103.2%	98.2%	101.8%	102.3%	101.5%
Beckom	Quick Mid	100.5%	101.2%	103.8%	97.9%	99.0%	98.1%	99.4%
Coota	Mid	98.4%	98.4%	101.2%	94.8%	98.4%	97.7%	98.7%
Coolah	Mid Slow	98.1%	97.9%	98.5%	97.1%	98.5%	98.7%	98.5%
LRPB Lancer	Mid Slow	96.3%	95.1%	97.4%	92.2%	98.8%	93.0%	101.8%
Mean Predicted Yield (t/ha)		5.35	5.19	5.34	5.00	5.76	5.81	5.74



AGRONOMIC BACKGROUND

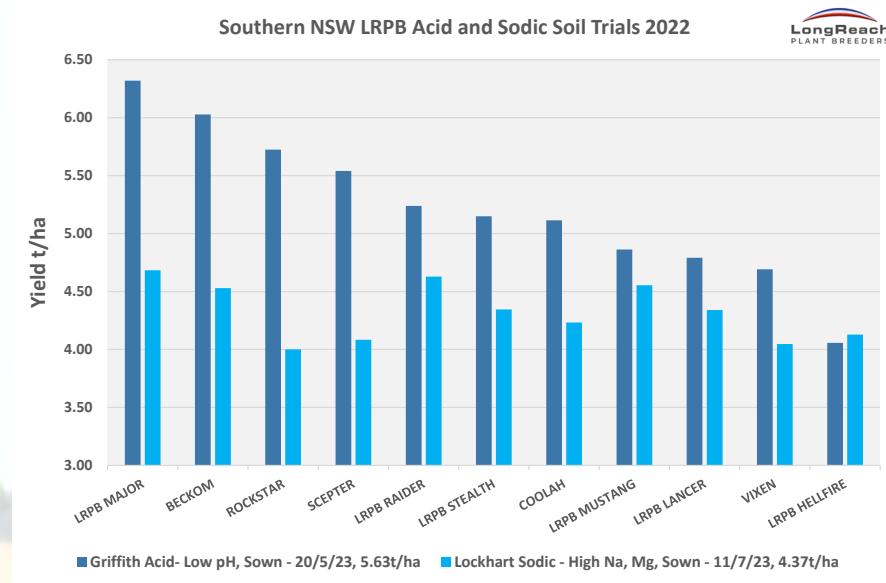
LRPB Major is a Beckom x LRPB Mustang cross made with the aim of developing a variety with strong acid and sodic soil tolerance that is well suited to NSW and Victoria.

LongReach field testing since 2018 suggests a flexible sowing window well suited to early to mid late sowing opportunities across Southern NSW and Victoria.

LRPB Major has a compact canopy similar to the Beckom parent with good standability. An good disease package with improved Septoria and Yellow leaf spot resistance makes LRPB Major a variety well suited to full stubble retention farming systems across Southern NSW and Victoria.

ACID AND SODIC SOIL PERFORMANCE

In 2022 LongReach conducted additional trials across NSW looking at variety yield performance in both Acidic and Sodic soil conditions. In trials under both highly acidic and sodic conditions LRPB Major was proven to be one of the highest yielding varieties in the trials. These results back up previous years trials looking at performance under sodic soils across the state, lab abiotic testing, and genetic marker data confirming the presence of both Aluminum and Boron tolerance genes in the variety.



LRPB Major is available through our Associate Network For Contact Information please go to www.pacificseeds.com.au



PLANT BREEDERS RIGHTS

LongReach Major is protected by Plant Breeders Rights (PBR). In regard to propagating material (planting seed) of this variety, any unauthorised commercial production or reproduction, conditioning for propagation, offering for sale, sale, import, export or stocking of propagating material is an infringement under the Plant Breeders Rights Act 1994. No Grower to grower trading of seed of LongReach Major is allowed.

End Point Royalty (EPR) Each time a grower purchases seed of LongReach Major the grower agrees to comply with the Variety Licence and Royalty Agreement, including agreement to pay the EPR of \$4.00 per tonne (GST excl). EPR is payable on all grain production, except on seed retained by the grower for replanting by the grower. The majority of the EPR will be paid by Advanta Seeds to the Breeder (LongReach Plant Breeders) for investment in future wheat breeding programs.

The information provided in this publication is intended as a guide only. Advanta Seeds Pty Ltd (including its officers, employees, contractors and agents) ('Advanta Seeds') can not guarantee that every statement is without flaw of any kind. While Advanta Seeds has taken all due care to ensure that the information provided is accurate at the time of publication, various factors, including planting times and environmental conditions may alter the characteristics and performance from plants.

Advanta Seeds shall not be liable for any errors or omissions in the information or for any loss, injury, damage or other consequence whatsoever that you or any person might incur as a result of your use of or reliance upon the products (whether Advanta Seeds products or otherwise) and information which appear in this publication. To the maximum extent permitted by law, the liability of Advanta Seeds for any claim whatsoever arising out of the supply or use of or reliance upon the products and information in this publication (including liability for breach of any condition or warranty implied by the Trade Practices Act 1974 or any other law) is limited at its discretion, to the replacement of the products, the supply of equivalent products or the resupply of the publication. For application to specific conditions, seek further advice from a local professional.

© Advanta Seeds 2023.